






Stunning 2 bedroom second floor luxury apartment with far reaching views.

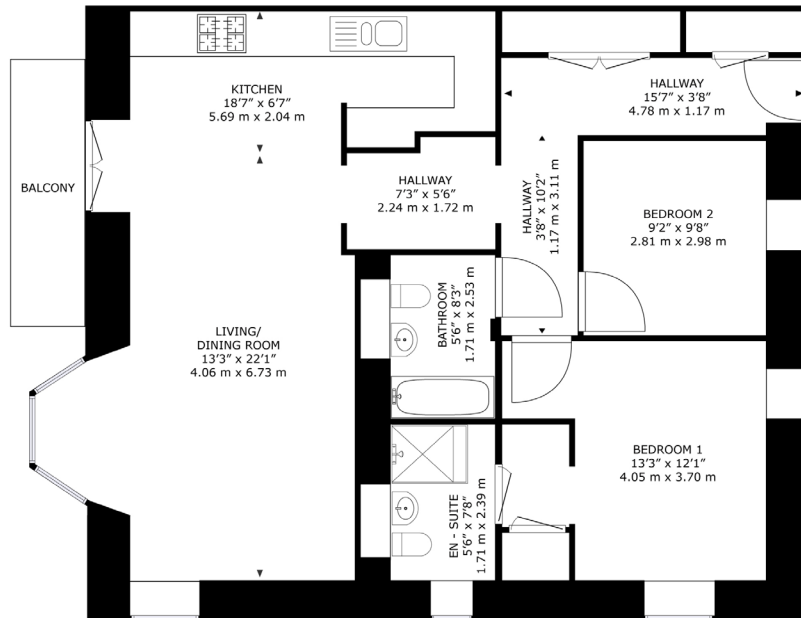
 2 Bed  2 Bath  1 Reception

Lindsays are delighted to bring to the market this 2 bedroom second floor luxury apartment (with lift) in the popular town of Crieff. Beautifully presented with an amazing glass screened balcony from which to appreciate the uninterrupted view over Macrosty Park and beyond. Benneath is a former Victorian boarding house for Morrison's Academy (built 1879) that was converted in 2013 by Corryard Developments into 9 unique, luxurious, and energy-efficient apartments. Number 7 is presented in absolute move in condition and accommodation comprises an L shaped hallway with 2 large storage cupboards; a beautifully airy and light reception room with ample space for both sitting and dining which is open to the contemporary galley style kitchen offering plenty of storage as well as integrated appliances to include a gas hob, oven, extractor, microwave, washing machine, dishwasher and fridge freezer. Just off the dining area are double doors leading out to the balcony. There are two double bedrooms with an en suite shower off bedroom 1 as well as a luxury bathroom with wash hand basin, WC, bath and heated towel rail. Externally there is an allocated parking space, private garden store and communal gardens. The property lies within walking distance of the town centre and all its amenities, making this the perfect home for a wide range of buyers. Viewing couldn't be highly recommended enough.

Features

- O/P Lounge/dining/kitchen
- Balcony
- 2 Bedrooms
- 1 Ensuite
- Bathroom
- Allocated parking
- Communal gardens
- EPC Rating Band B

Offers Over £250,000



Flat 7, Benheath House, Gwydyr Road, Crieff, PH7 4BX

GROSS INTERNAL AREA
 TOTAL: 912 sq.ft, 84.7 m²
SIZES AND DIMENSIONS ARE APPROXIMATE, ACTUAL MAY VARY.



Crieff is a traditional Scottish market town set amidst Perthshire's stunning scenery. The attractive and bustling town centre supports a wide range of businesses offering the best of food and drink, clothing, gifts, crafts and arts. There is a great choice of cafes, restaurants for fine or casual dining. A popular destination for tourists, Crieff's attractions include the Visitor Centre and Glenturret Distillery. Local schooling is available at primary and secondary level and independent schooling is available at Morrison's Academy and Ardvreck.

FOR VIEWING:

By appointment only

Contact Lindsays on:

01764 910555

crieffproperty@lindsays.co.uk

property.lindsays.co.uk

Prospective purchasers are requested to note formal interest with Lindsays as soon as possible after viewing in order that they may be informed of any closing date. The sellers reserve the right to sell without imposing a closing date and do not bind themselves to accept the highest offer or any offer. No warranty will be given for any appliances included in the sale. These particulars are believed to be correct, but their accuracy is not guaranteed and they do not form part of any contract. Dimensions are approximate.